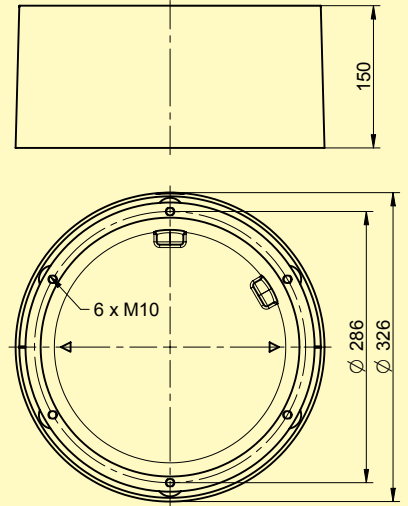


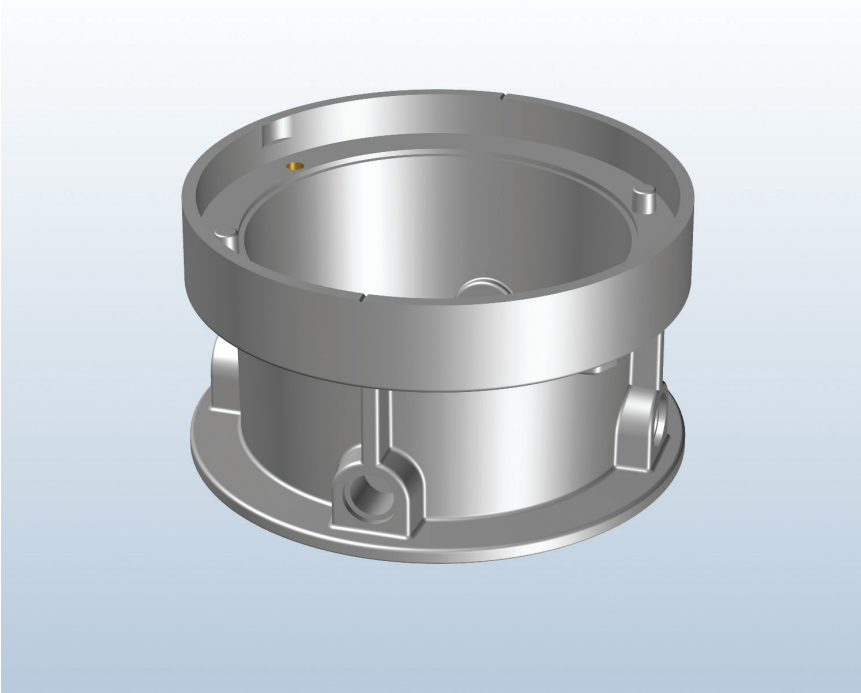
Base receptacle IDM 6485



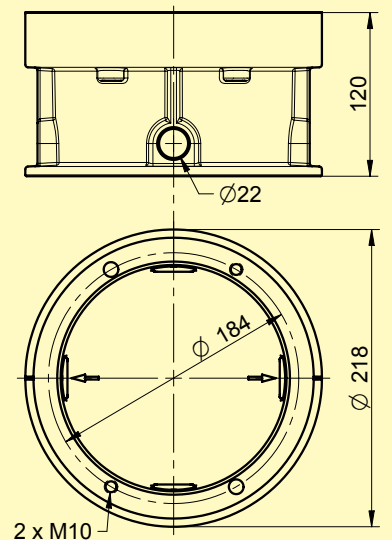
- For 12" luminaires, 8" luminaires with adapter ring IDM 6479
- Cast aluminium construction
- Anodised for excellent corrosion protection and maximal adhesion of

- fixing compounds
- Replaceable thread elements with locking feature
- Weight 4,9 kg

- Two possible Pg16 cable entries on side. Optionally equipped with bottom hole $\varnothing 130$ mm. Please specify when ordering.



Base receptacle IDM 6494



- For 8" luminaires
- Cast aluminium construction
- Anodised for excellent corrosion protection and maximal adhesion of fixing compounds

- Replaceable thread elements with locking feature
- Two anti-rotation pins
- Weight 2,3 kg

- Four possible cable entries on side, two equipped with Pg16 threads as standard. Optionally equipped with bottom hole $\varnothing 100$ mm. Please specify when ordering.